

THUMBS UP MACHINE

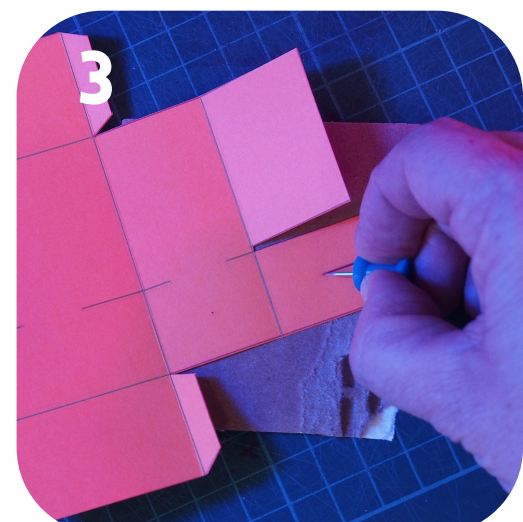
INSTRUCTIONS



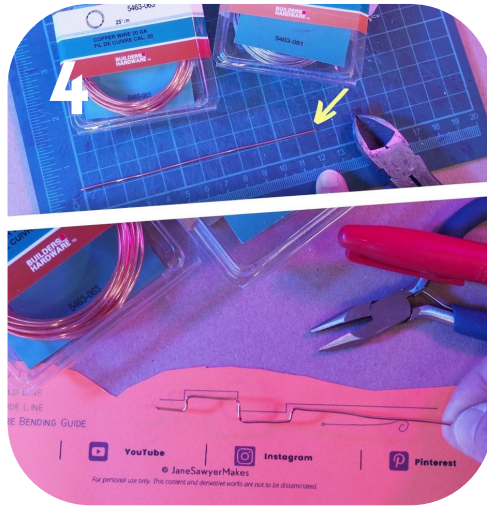
1 Cut out box, lid, shelf, and hands.



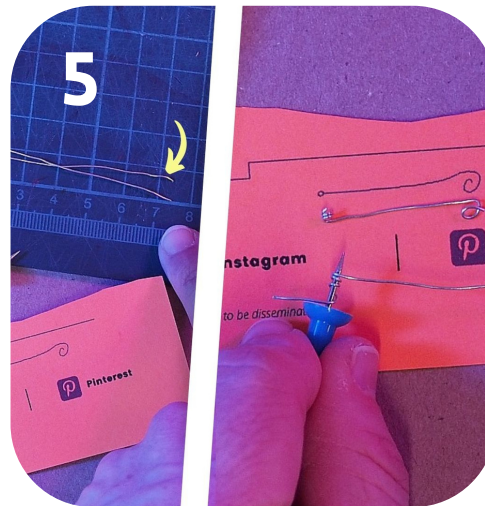
2 Score and bend all fold lines



3 Poke the six marked holes



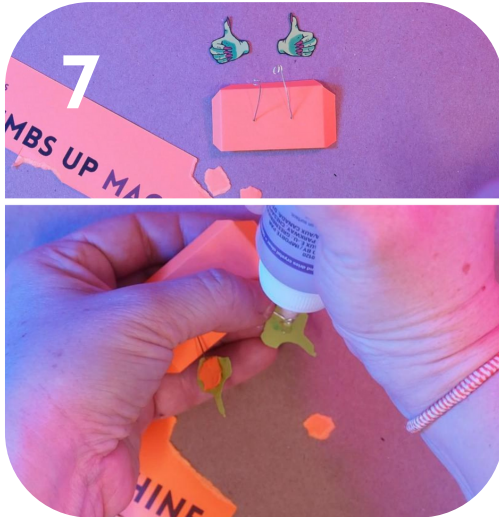
4 Use 20 gauge wire, bend along crank shaft guide.



5 Use floral wire, form hand rods.



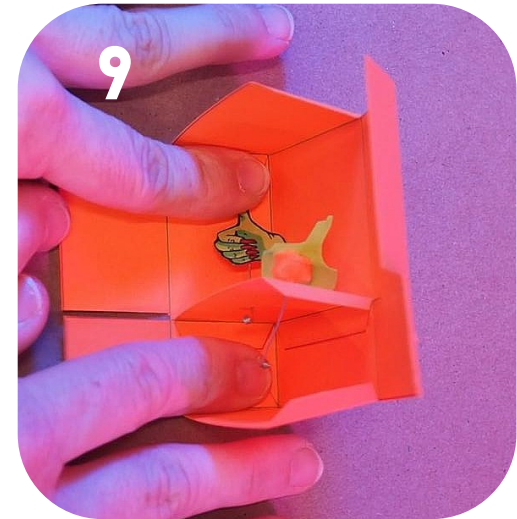
6 Thread hand rods up through holes in shelf.



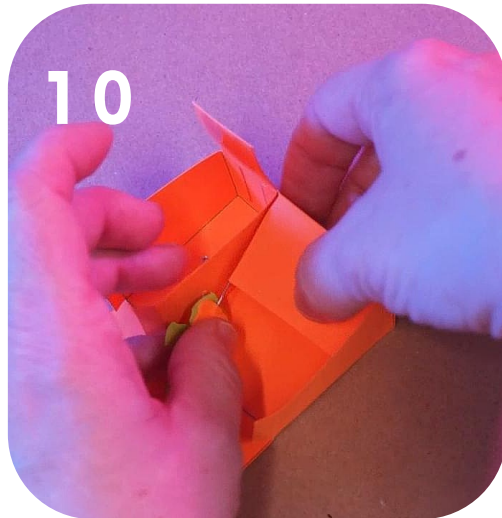
Glue hands to hand rods.



Glue shelf tabs to back and left wall of box.



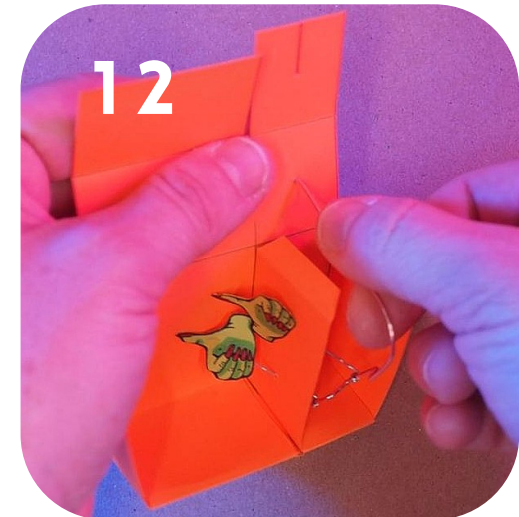
Glue left tab of top and left tab of bottom to left wall of box.



Glue and fold over left side reinforcement panels.



Wiggle ends of hand rods onto crank shaft.



Thread long tail of crank shaft through right wall of box.



13 Put left end of crank shaft through left wall of box. Bend up end of crank shaft to lock in place.



14 Glue tabs of top, shelf, and bottom to right side of box.



15 Glue and fold over right side reinforcement panels.



16 Bend crank shaft tail into a crank. Straighten hand rods, if needed.



17 Slide on bead, bend over end to lock.



18 Assemble lid.